

M 船用舷梯系列 arine Acc. Ladders In Series

舷梯系列产品为公司主要产品，它包括翻转式舷梯、平移式舷梯、伸缩式舷梯、翻转/平移外伸式舷梯、双节式舷梯、引航员辅助舷梯、活动踏步舷梯、潜水员舷梯、港口专用登船梯等近十种类型舷梯产品。舷梯本体分为防锈铝合金和钢质材料，铝合金材料表面采用阳极氧化处理，钢质材料表面采用热镀锌或防锈漆涂层处理。

The series of accommodation ladder are our main products, including turning type accommodation ladder, level-movable accommodation ladder, telescopic type accommodation ladder, turning/level-movable outward extending accommodation ladder, 2-part type accommodation ladder, pilot assistant ladder, step movable accommodation ladder, diver acc.ladder and port gangways etc. The main material are aluminum alloy and steel, the surface treatment is: aluminum alloy by anodic oxidation, and steel by hot gal. or painted by anti-rusty painting.



舷梯系泊试验

Mooring test of accommodation ladder



翻转式舷梯模块

Turning type accommodaation ladder modular structure

船用铝质翻转式舷梯【CB/T4185—2011】

Marine aluminium alloy turning type acc. Ladders

本产品按ISO5488—79和CB/T4185标准设计制造。

本产品配置CB/T4186—2011标准翻转装置。

本产品有多项专利技术满足特殊翻转布置要求，结构紧凑，操作简单方便，使用安全、可靠，可模块化供货。

Design and manufacture according to ISO 5488-79 & CB/T4185.

Assembled standard as CB/T4186—2011

This product has a number of patents to meet special turning layout requirements, and it's reasonably structured, easy and convenient to operate and safe and reliable to use. We can also supply this product by modules.

【CB/T3956—2004】船用铝质平移式舷梯

Marine aluminum lever-movable acc. ladder

适用于大型与超大型油轮、甲板面比较宽大的矿砂船等散货船舶。

For large and supertanker, ore carriers which have fairly large deck and other bulk carriers.



本产品按照ISO5488—79和CB/T3956—2004标准设计、制造，满足MSC.1/Circ.1331等最新国际规范要求，操作方便，水平放置，使用安全、可靠。

Design and manufacture according to ISO 5488-79 & CB/T3956-2004. Meet regulatory requirements MSC.1/Circ.1331 etc. The product is easy to operate, horizontal, safe and reliable to use.



船用铝质伸缩型舷梯【CB/T4190-2011】

Al. alloy telescopic acc. Ladders

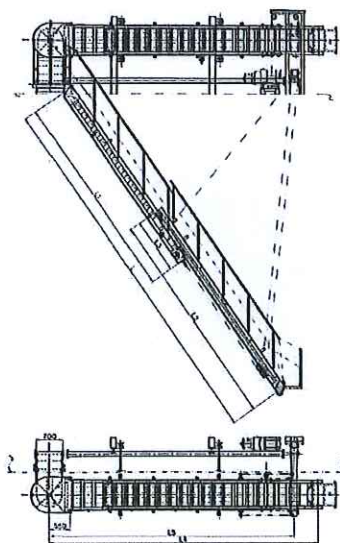


30m 铝合金阳极氧化槽
30m Aluminum alloy anodic oxidation vat

本产品按照ISO5488—79和CB/T4190—2011标准设计、制造，满足MSC.1/Circ.1331等最新规范要求。

本产品配套使用CB/T4186—2011翻转装置。

两节伸缩，结构紧凑，操作灵活、方便，适合于集装箱船，或受舷梯布置区域限制的大型船舶，产品拥有自主知识产权。



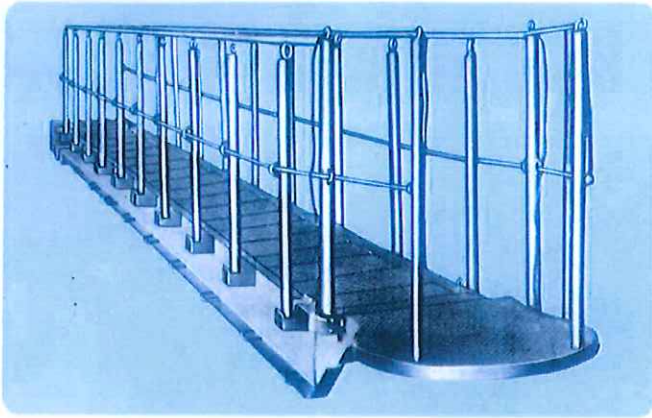
Design and manufacture according to ISO 5488-79 & CB/T4190-2011. Meet regulatory requirements of MSC.1/Circ.1331.

CB/T4186-2011 Turning device for aluminium Acc. ladders is prepared.

The product is reasonably structured with two sections adjustable ones and easy and convenient to operate. It's suitable for container ships or large ships or large area that are limited by acc. ladders. The products have patent by our corporation.

船用钢质舷梯系列

Marine steel acc. Ladders



钢结构表面热镀锌

The surface is treated by hot Gal. for steel structure

产品符合ISO5488—79标准，以及最新IMO规范要求，结构合理，规格齐全，使用安全可靠。

参照配备CB/T4186—2011翻梯装置。

根据用户需求，特殊规格亦可承担设计制造。

According to ISO 5488-79 and the latest IMO requirement the product is reasonably structured with complete specification, safe and reliable to use.

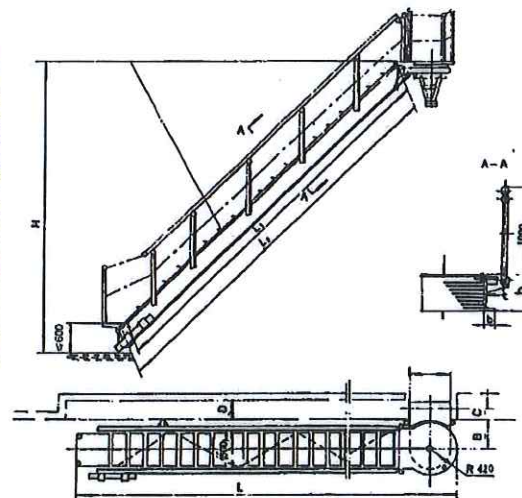
Refer to GB/T4186-2011 turning device for steel Acc. ladders is prepared.

According to customer's requirement, design and manufacture of special specification can be carried out.



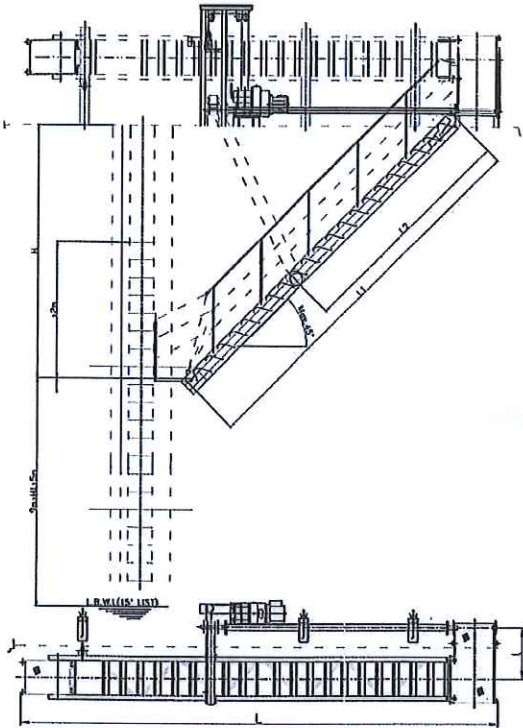
舷梯翻转试验

Returning test of acc. ladder



船用铝质引航员舷梯

Marine aluminium pilot acc. ladder



本产品同时配套使用翻转装置、紧固装置和绞车，符合国际海上人命安全公约（SOLAS）。可与引航员软梯配合使用，安全可靠，使用方便，满足MSC.1/Circ.1331-1375/Msc87等最新规范要求。

The products assembled also turning device, fixed device and winch, reach the requirement of life-safety of SOLAS, and can also use together with the pilot ladder, they are safe, reliable and convenient, reach the requirement of MSC.1/Circ.133-1375/Msc87 etc.



舷梯自动校正

Auto-adjust of acc. ladder



舷梯模块制作现场

Making-shop of modular structure acc.ladder



生产现场一角

Making-shop

登船梯、船用软梯系列

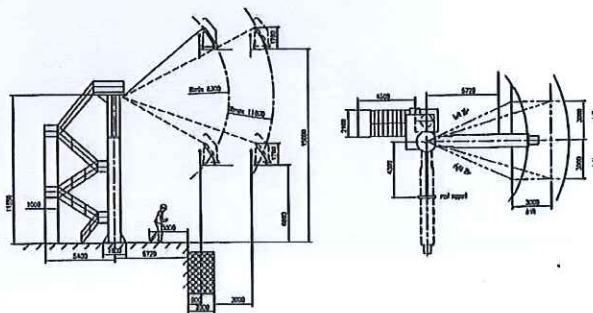
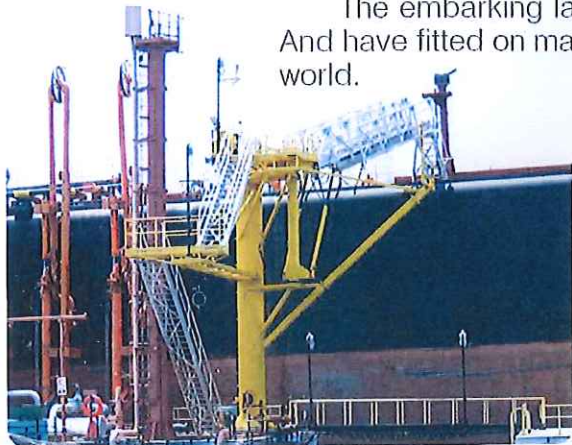
Gangway, Aluminium Step of fixed type

港口登船梯

Port Gangways

本登船梯广泛应用于石化港口码头，供船员或工作人员上下船使用。已配套用于国内外多个石化码头。

The embarking ladder is used widely for the port of Oil-chemical. And have fitted on many Oil-chemical port in domestic and all over the world.



木质引航员软梯

Wooden pilot ladders

本产品供引航员上下船使用，结构紧凑，乘登安全，并符合1974年国际海上人命安全公约（SOLAS）的有关规定，以及修正案，参照ISO799—2004标准设计制造，满足MSC.1/Circ.1331-1375/Msc87等规范要求。

Designed for pilots embarking and disembarking, it's to the satisfaction of the relevant requirement of SOLAS 1974, meet A.889 (21) Resolution and designed and manufactured according to ISO799—2004 and with the features of strong structure, durable & safety.



木质登乘梯

Wooden embarkation ladders

本产品参照ISO5489-2008（登船梯）标准设计制造满足SOLAS公约，以及最新规范要求，可生产铝质和木质登乘软梯，长度最大已达60m以上。

The products designed and made as ISO5489-2008 and also suit to the requirement of SOLAS, can supply aluminum and wooden type, the maximum length over 60m.



铝质登乘软梯

Aluminum embarkation ladders